

2022
–
2023



ANNUAL REPORT



TABLE OF CONTENTS



03	Executive Summary
04	Core Values
05	From Ryan
06	From Our Board Chair
07	Where We Worked
08	Project Report
09	Project Challenges
10	Build Goals
11	Build Stack-Up
12	Educate/Motivate
13	School Challenge
14	Organizational Structure
15	Financial Overview
16	Acknowledgements

EXECUTIVE SUMMARY

Since 1998...



It's been a year of reconnecting; of discovering new friends; of rejoicing that we are back in the field again after three long years of the pandemic.

This year, we provided clean water to over **59,451** people in two countries: Uganda and Ghana. Ryan's Well staff also conducted **55** virtual presentations for **12,182** people in **7** countries.

In this Report you will hear from staff and Board members of their first-hand experiences in Uganda and Ghana; our two main project countries. We hope you will find it inspiring and informational as we provide key details of this year's progress.



We were proud to be named one of Charity Intelligence Canada's Top 100 Charities, with their highest 5-star rating

**1.4
MILLION
PEOPLE**

Now have access to
clean drinking water
and sanitation

**1724
WATER
PROJECTS**

Completed to
provide clean
water

**1321
LATRINES**

Built to provide
sanitation, hygiene,
and dignity

**17
COUNTRIES**

Have benefited from
the work of Ryan's Well
Foundation

Mission

Ryan's Well Foundation, together with local partners, provides access to clean Water, Sanitation services, and Hygiene education to people most in need of WASH support. We educate and motivate people to share our passion and contribute to achieving positive change in the world.

Vision

To build a more equitable world through clean water and sanitation, leaving each community we work with empowered and self-sufficient.

Build

Clean water, Sanitation
& Hygiene Projects

Educate

On the Importance of Access
to Safe Water & Sanitation

Motivate

To Get Involved
& Make a Difference



FROM RYAN

It was easy to write off the Ryan's Well project when it first began. I was a rural small town kid who looked forward to recess and didn't know my multiplication tables yet. How on earth would a small fundraiser for clean water projects half a world away would result in anything tangible?

In part there was truth to that; I didn't have much agency, capability or the least idea how to begin something for which I felt such a strong connection. Even today volunteering and working for 25 years now I think I have a fraction of what is required to make a difference bringing the world clean water.

Lucky for me, from the very beginning I have never been alone and people have come together volunteering, working and donating to Ryan's Well Foundation to help us bring together what is required.

We're even more fortunate to have cultivated long standing relationships with our local partners in areas hardest hit by the world's water crisis. Our partners have flourished over the years to champion communities most vulnerable to improve the quality of life.

In 2023, the Ryan's Well community stands strong together. Whether donating, volunteering or sharing our messages on social media, everyone makes a difference and for that I continue to be humbled and grateful.



Ryan



FROM OUR BOARD CHAIR

I am very pleased to include my reflections on this past year not only as Board Chair but also as a daughter of the Continent myself. Born in Nairobi, Kenya, I suppose my relationship with RWF was already written in the stars.

After two years without in-person site assessments, RWF was back in the field to conduct project evaluations on behalf of our donors. We embarked on two major monitoring trips last year:

1. Uganda in August 2022 to evaluate 74 projects with our two local partners, DivineAID and RWIDF;
- and 2. Ghana in January 2023 to evaluate 45 projects with our project partner, DONA.

My “Discovery” trip to Ghana left some lasting impressions. It was a crash course in water scarcity issues, the different types of water wells, and testing which works better depending on the soil, infrastructure, and need for maintenance and management. Ghana has clean water sources, but they are trapped in between layers of red rock, which makes it very difficult to pump or drill.

We walked down to see the original sources of water that were used before the RWF wells were installed. Young students were often dispatched to make the trip for water collection more than 10 times a day, on treacherous paths. Now, our wells are conveniently situated in the centre of a village or on the grounds of a school, or at a proper sink station in a health clinic. I must have heard and said the word, “Medaase” a thousand times. For those of you venturing to Ghana, “Medaase” means Thank You in Twi, and it will make you fast friends everywhere you go!

The look-back site visits to wells we installed years ago were important because communities didn’t know we were coming. The element of surprise was good to get a sense of how the community is really honouring a donor’s contribution, and to hear from the beneficiaries themselves how RWF donations were not just one hit wonders, but are actually sustainable.

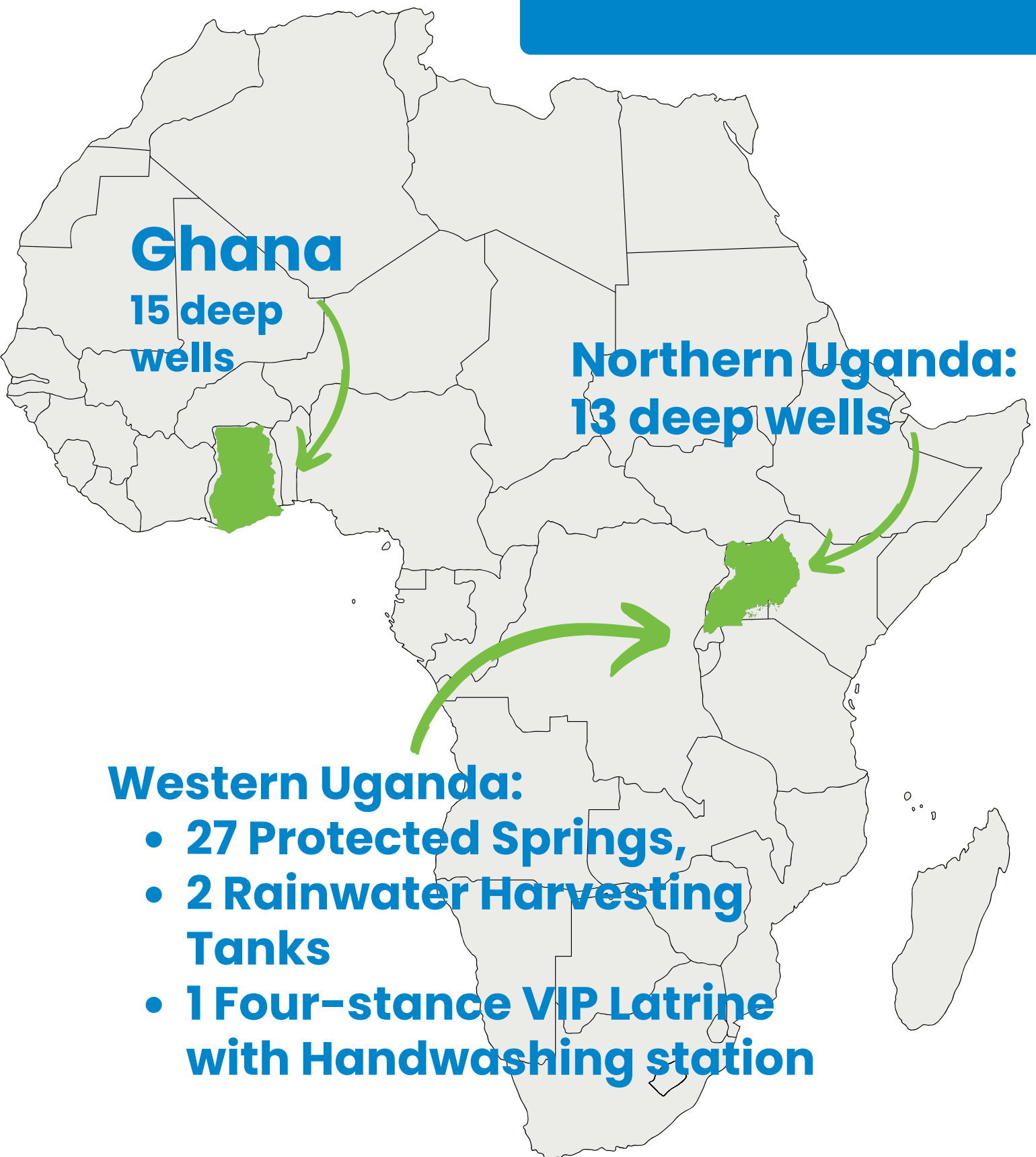
Ryan’s Well is one of the only organizations in the region to go beyond the city centres and main roads to reach communities deep in the bush. Often, we were driving 16 hours uphill, through rain and dust storms, on shaky terrain. Had I not experienced it first hand, I would not have believed it. Local staff members make this type of trip on a daily basis!

We were impressed with the quality of WASH projects installed, the level of training provided, and the eagerness of our local partners to continue improving their programs. We are proud to continue our partnerships, and are actively working to help more than 100,000 people with local teams in 2023–24. On behalf of the RWF Board, I would like to thank Ryan, our dedicated staff, team of volunteers, project partners, and donors, who really make it possible for all of us to have a transformative impact on the daily lives of so many human beings.

In the coming years, we intend to accelerate the RWF vision for more profound impact and transformative change with the development of a new strategic plan. We look forward to your support and guidance on the journey ahead.

Rosemina Z. Nathoo, Board Chair

WHERE WE WORKED



PROJECT REPORT

Thanks to the generosity of our donors, we were able to fund the construction of 57 water projects and four latrine stances in two countries, Ghana and Uganda, providing 59,451 people with sustainable access to safe water, sanitation services, and WASH (Water, Sanitation, and Hygiene) education.

After two years without in-person site assessments, we are back in the field to conduct project evaluations on behalf of our donors! We embarked on two big monitoring trips last year: to Uganda in August 2022 to evaluate 74 projects with our two local partners, DivineAID and RWIDF; and to Ghana in January 2023 to evaluate 45 projects with the DONA team. We were beyond impressed with the quality of WASH projects installed, the level of training provided, and the eagerness of our local partners to continue improving their programs. We are proud to continue our partnerships with DONA, DivineAID and RWIDF, and are actively working to help more than 100,000 people with these teams in 2023-24.

My most memorable moment from the past year was while visiting Aboabo II Certified Health Post in the Ashanti region of Ghana. Upon arrival, we heard a woman giving birth inside the Health Centre. We were greeted by another nurse, named Tachika, and she showed us the newly installed well while her colleagues helped to deliver a baby inside. Although the government in Ghana helps to fund these Health Centres (including beds, equipment, and health materials), the connection of the health centre to a reliable, safe water source is the responsibility of the community. The main source of income for 90% of the population in this area is small-scale farming; major crops cultivated are cocoa, palm oil, plantains, and rice. Therefore, considering these communities have very little supplementary funds, financing the construction and installation of a deep well, storage tank, and piping to the Health Centre is typically impossible for these communities.

Without running water access, these Health Centres cannot be considered 'Certified Health Posts' (CHP compounds - pronounced 'chip'). As a result, these health centres cannot provide service to pregnant and/or women in labour, ultimately causing an increase in pregnancy-related health problems and miscarriages in the area. It was beyond fulfilling to 'hear' our donor's contributions in action, and to know that a healthy baby was about to enter this world, thanks to our collective efforts.



Kelly

PROJECT CHALLENGES

Throughout 2022–23, our local partners experienced numerous issues in the field. Most notably for all three partners was the extreme weather conditions. WASH training sessions and construction activities were delayed during the rainy season, and the extreme drought during the dry season caused big potholes to occur in the roads and changes in the water tables. Similarly, the lack of roads and accessibility to some sites caused the partners issues, especially in Western Uganda. RWIDF reported that the steepness of some roads caused them to deliver construction materials (including pipes, bags of sand and cement) to the site by hand. Daily life within the villages, such as garden work, funerals, and market days, also affected planning for our partners; the teams had to adjust their programs to fit the beneficiaries' schedules. Inflation in both Ghana and Uganda has continued to pose a challenge for our partners concerning the price of materials, fuel, and the cost of labourers. Despite these challenges, our local partners managed to finish all projects by April 2023! We also learned from these challenges, and have restructured our Build Program for 2023–24 to plan ahead for these less predictable times. For example, we are discussing the feasibility of prolonged project timelines from our typical 12 months to 15 months; this way, the continuing unpredictability of weather conditions, inflation, and scheduling mishaps will not affect the time remaining for thorough evaluations at year-end.



BUILD GOALS

	GOAL	ACTUAL
WATER PROJECTS	65	57
LATRINES	N/A	1
PEOPLE HELPED	65,000	59,451
BUILD BUDGET	\$961,408	\$610,015
FEMALE REPRESENTATION ON WATER COMMITTEES	50%	54%

Our small team here at Ryan's Well Foundation have dedicated a lot of time in planning for the future. Part of these strategic planning sessions includes setting goals for our BUILD program, and ideally, working towards a larger impact each year through set objectives.

Above are detailed some of our successes from the 2023 fiscal year, such as exceeding our goal for the amount of latrines constructed and female representation on Water Committees! We did not specify the number of latrines we want to build each year, as our funds are mainly focused on the construction of safe water sources; however, we did provide a primary school with a 4-stance latrine, as this school was in desperate need of an improved sanitation facility. In terms of female representation on Water Committees, we advocate for at least 50%, and the combined average of our three local partners was 54%!



Other BUILD program goals, such as the amount of water projects we want to construct annually, the number of people we want to help, and sticking to our set BUILD program budget were slightly missed. In this case, we had originally planned to work in Burkina Faso for the 2022-2023 fiscal year; however, we were unable to get this project started due to a lack of funding and safety concerns in the working region. The inability to work in Burkina Faso during the 2023 fiscal year significantly impacted our BUILD program outputs in terms of the expected number of water projects constructed, people helped, and expected budget.

BUILD

How we stacked up in 2022–2023



WATER SOURCES

2019–2020

62

2020–2021

40

2021–2022

55

2022–2023

57

PEOPLE WE'VE HELPED

2019–2020

48,378

2020–2021

61,803

2021–2022

89,019

2022–2023

59,451

WHY ARE MORE PROJECTS HELPING FEWER PEOPLE?

Our local partners prioritize helping the most vulnerable communities in their working regions. Some of these villages are small, comprising of only 88 people. We did install deep wells (also known as boreholes) for health centres and schools, which can serve 10,000+ people daily. However, we also focused on helping 27 smaller communities, the largest of which is home to 464 people.

EDUCATE/MOTIVATE

How we stacked up in 2022–2023

This year, our **EDUCATE** and **MOTIVATE** programs were much improved following the challenges of the pandemic. Our schools rallied and fundraised to their best ability with imagination, dedication and a great deal of fun, and thousands of people worldwide benefitted by both in-person and virtual presentations from staff and Board members.



12,182

*people educated
through presentations*

53

*presentations given by
Ryan's Well team
members*

7

*countries given
presentations*



SCHOOL CHALLENGE

The first School Challenge well was built for Beitmat Village in Aromo Sub-County; the well was installed on June 7, 2022. Matalala Village in Aromo Sub-County also received a deep well this year! Both wells have undergone water quality testing before the water sources were commissioned and officially handed over to the villages.

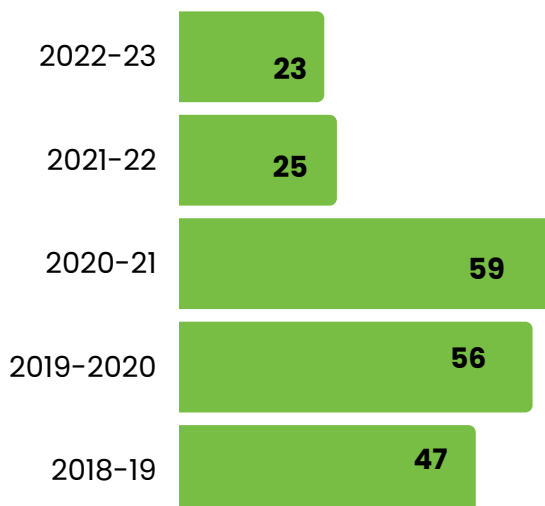
Our local partner has educated Beitman and Matalala village members on proper WASH (Water, Sanitation and Hygiene) techniques. This WASH training included this basic education, and how to maintain and source repairs for their water source.



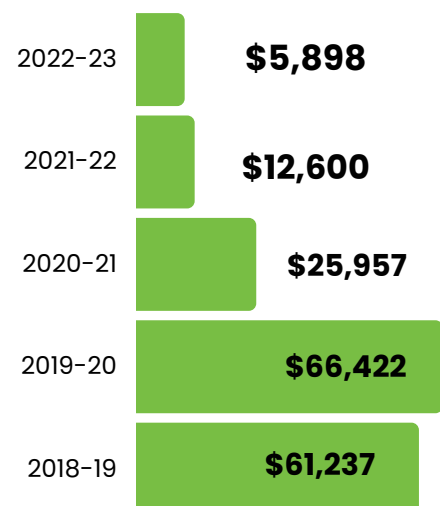
Before the construction of these wells, people living in Beitman villages would drink from contaminated surface ponds, and use this same source for handwashing, dishes, and clothing.

Thanks to the 2022-23 School Challenge participants, villagers have reported an immediate reduction in water-related illnesses and flu. Also, the incidence of waterborne diseases has greatly reduced. These diseases (diarrhoea, worms, dysentery, typhoid, skin diseases) were very common within Beitman village, but with this new well, people are feeling so much better. They want to say a big "Apowoyo Matet (Thank You)!". (Please note that some previous fiscal year donations went to this fiscal year's school challenge.)

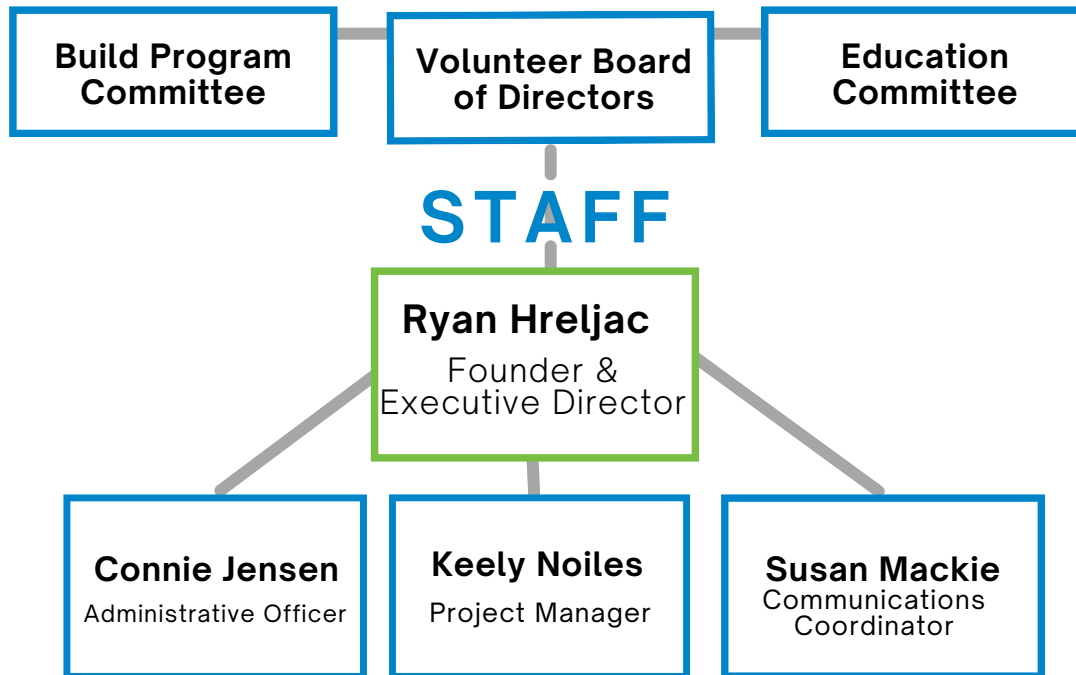
TOTAL SCHOOL CHALLENGE PARTICIPANTS



AMOUNTS DONATED BY SCHOOLS (FISCAL YEAR)



ORGANIZATIONAL STRUCTURE



BOARD

BUILD PROJECT COMMITTEE

CHAIR: Kevin Rogers
Jane Baird
Mark Hreljac
Shawn McCarthy
Barry Westby
Chris Radziminski

CHAIR – Rosemina Nathoo

VICE CHAIR – Nancy Prest

SECRETARY – Kevin Rogers

INTERIM TREASURER – Devan Pennell

EXECUTIVE COMMITTEE – Mark Nowell

EXECUTIVE COMMITTEE – Susan Hreljac

Michael Glofcheskie, Spencer Mulvaney
Sarah Gore, Kerry Lamming, Megan Underwood

EDUCATION COMMITTEE

CHAIR: Nancy Prest
Michael Glofcheskie
Kerry Lamming
Spencer Mulvaney
Megan Underwood

Volunteer Board of Directors: Our volunteer Board of Directors is our governing body. It provides oversight, insight, and long-term direction to the organization, and engages in both project planning and fundraising. It approves staff recommendations (operating and project budgets), and serves on sub-committees (such as the Build Program Committee and the new Education Committee). The Board's eleven members (five Executive Committee Members and six Board Members), meet at least four times every fiscal year.

Staff News: We said goodbye to Keely Noiles, our dedicated and professional Project Manager. Staff and partners alike benefited from Keely's sunny outlook and impeccable attention to detail. We wish her all good things in her next opportunity.

Build Program Committee: Ryan's Well Foundation's BUILD Program Committee is composed of six members, meeting bi-monthly (six times a year). The Committee provides oversight to the Board of Directors to ensure alignment of the BUILD Program with Board-approved plans, acts as a strategic advisory supporting the BUILD Program, and enables staff augmentation. Committee members can volunteer additional time to engage in specific initiatives (i.e. researching or vetting potential partners, analyzing data, or joining monitoring trips).

Education Committee: This Committee enables teachers to share the Ryan's Well experience and engage with their students. They will develop resources for teachers to incorporate during learning periods in their classrooms. They have hit the ground running by designing and implementing presentations well-received in Southern Ontario this year.

Partners



RWIDE
WESTERN UGANDA



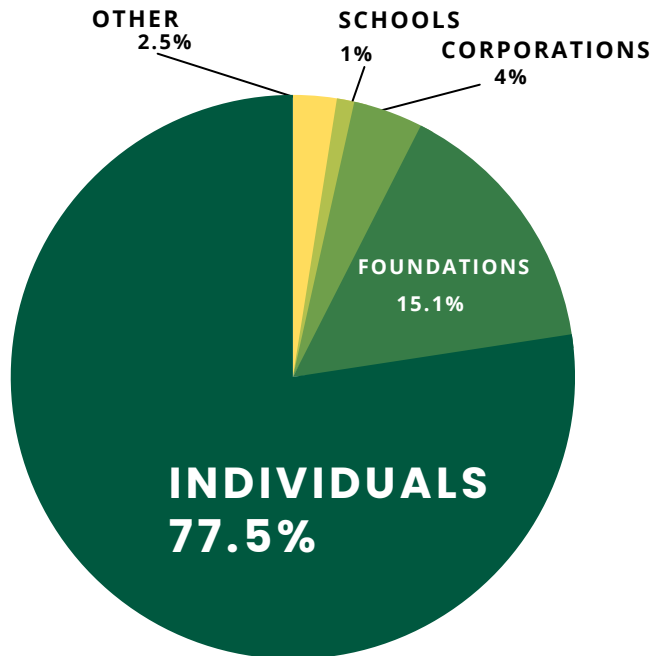
DIVINEAID
NORTHERN UGANDA



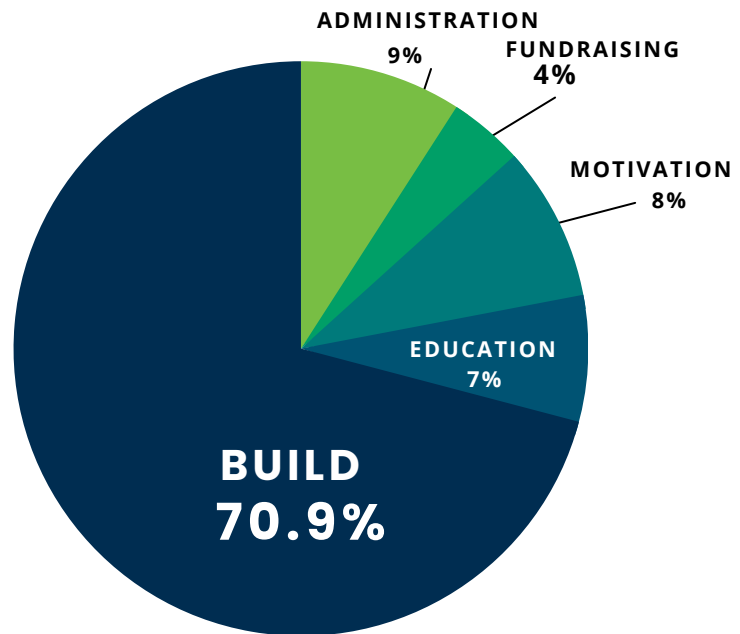
DONA
GHANA

FINANCIAL OVERVIEW

WHERE DID OUR FUNDS COME FROM?



WHERE DID OUR FUNDS GO?



This year, **86 cents of every donation dollar** spent has directly supported our charitable programs (Build - Educate - Motivate). As we continue to examine ways to grow and diversify our revenue stream, we are deeply committed to ensuring donations are directed towards our mission of improving lives and effecting change in the world. Our small and efficient team is critical to keeping our overall fundraising costs at 4%, and our average administration costs remain nearly unchanged over the past four years at 9%.

The Foundation's fiscal year runs from April 1st to March 31st. Our annual audit and financial statements were completed this year (2023) by the firm of Hendry Warren LLP. This audit can be found under 2022-2023 Audited Financial Statements on the Ryan's Well Foundation website at www.ryanswell.ca.

BUILD: Build clean water, sanitation, and hygiene projects, facilitate the accompanying WASH (Water, Sanitation, and Hygiene) training, and monitor the project upon completion to evaluate the level of sustainability.

EDUCATION: Educate on the importance of access to safe water and sanitation to raise awareness about the global water crisis. Includes the Foundation's conference and travel expenses.

MOTIVATION: Motivate people, especially youth, to get involved with their passions and make a positive difference in the world. Includes the Foundation's travel expenses to schools and other groups locally and internationally.

FUNDRAISING: Internal fundraising efforts within Ryan's Well Foundation to maximize our donor reach and potential impact (i.e., printing costs to mail our annual general reports and newsletters).

ADMINISTRATION: We strive to keep our Administrative fees as low as possible to ensure that funds go towards our charitable programs.

WE THANK OUR GENEROUS SUPPORTERS



Blossom
Foundation



K.L. & N. Truong
Foundation



Christa Ng
Professional
Corporation



Kemptville Physiotherapy Centre

Mohammad
Kanwal Family
Foundation



EMC Industries
Corporation



Newtown Presbyterian Church



KNIGHTS
OF COLUMBUS
IN SERVICE TO ONE. IN SERVICE TO ALL.

We would also like to thank all of our generous individual donors - including those who make legacy donations and those who honour loved ones and special occasions. We couldn't do what we do without the help of many.

Thank you!

AND OUR DEDICATED PARTNERS





www.ryanswell.ca

Registered Canadian Charity 88858 7110 RR0001

P. O. Box 1120
Kemptville, ON K0G 1J0
Tel. 1.613.258.6832